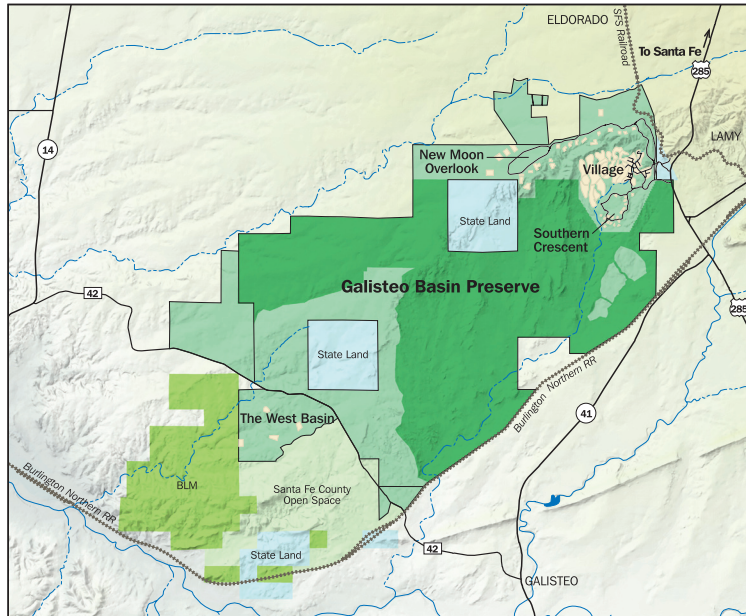
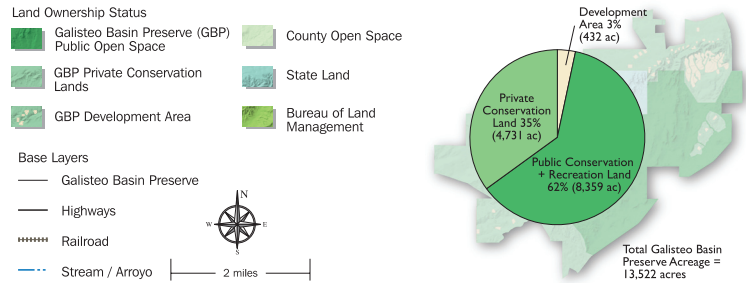


GALISTEO BASIN PRESERVE

COMMUNITY SETTING



Community Setting
GALISTEO BASIN PRESERVE



The Galisteo Basin Preserve is an initiative of Commonweal Conservancy, a Santa Fe-based nonprofit organization. For more information about the Preserve, its programs, the Village plan, and available properties, call 505.982.0071, x105, or visit us online at www.GalisteoBasinPreserve.com



117 N. Guadalupe St., Ste. C | Santa Fe, NM 87501

GALISTEO BASIN PRESERVE

A Stewardship Community in Santa Fe, New Mexico

WHAT IS A STEWARDSHIP COMMUNITY?



www.GalisteoBasinPreserve.com

“We can be ethical only in relation to something we can see, feel, understand, love...” — Aldo Leopold

WHAT IS A STEWARDSHIP COMMUNITY?

A stewardship community, as opposed to a conservation development, compels us to develop a deep understanding, responsibility, and commitment to our home place. Aldo Leopold’s vision for a land ethic—a society that is well-versed and fully engaged in our planet’s protection and regeneration—provides us with powerful inspiration for this endeavor.

In a stewardship community, residents and visitors have many opportunities to become deeply knowledgeable about their roles as healers and interpreters of their landscape. Stewardship activities include species inventories, riparian and grassland restoration, watershed monitoring, cultural resource surveys, trail building and maintenance, way finding, sustainable farming and grazing, healthy building seminars, astronomy lectures, and interpretive education.

The early stages of stewardship community-making are already happening at the Galisteo Basin Preserve, a path-setting initiative in Santa Fe County that is designed to protect 13,000 acres of open space and promote thoughtful, stewardship-oriented community development. The Preserve’s development focus, the planned Village at the Galisteo Basin Preserve, is an important part of creating a culture of stewardship in this remarkable landscape.

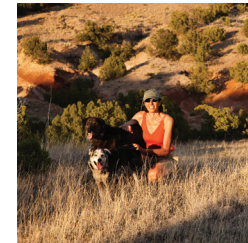
A Galisteo Basin Preserve Community Stewardship Organization (CSO) will eventually manage and regenerate the Preserve’s open space and grow the community’s long-term connection to this land and its systems. The CSO will work to:

- Build regenerative capacity** in the land, community, and local economy.
- Foster resilient ways of living** within high-desert ecosystems, as well as with a changing climate and resource availability.

Create a range of opportunities for engagement with the land, community-members, neighbors, and visitors around such issues as watershed stewardship, food security, biological diversity, open space, regional self-reliance, and our ecological footprint.

We can start this work now! Local organizations, schools, and private citizens are already partnering to care for the Preserve.

How do you want to play a role? What are your ideas for how we can do this work better and more collaboratively—and bring greater benefit to ourselves, our community, and our home places? What does a stewardship community mean to you?



*“To the extent that our links with nature are disrupted, we may also lose some connection with each other”**

Aldo Leopold quote from “The Land Ethic” in A Sand County Almanac.

* Weinstein et al. “Can Nature Make Us More Caring? Effects of Immersion in Nature on Intrinsic Aspirations and Generosity.”
Photographs by Nevada Wier: cover photo, panorama, antelope, biker + dog; Evelyn Bemis: arroyo, gallardia; Commonwealth Conservancy.